

RWD | 瑞沃德

Western Blot Imager

Sensitive

Expeditious



Intelligent

Compact

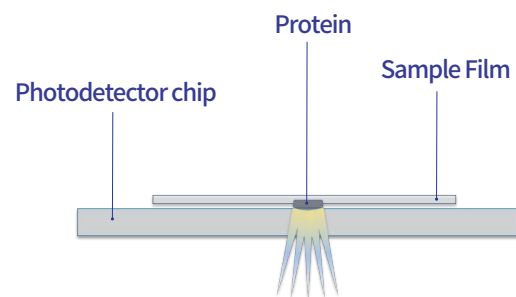
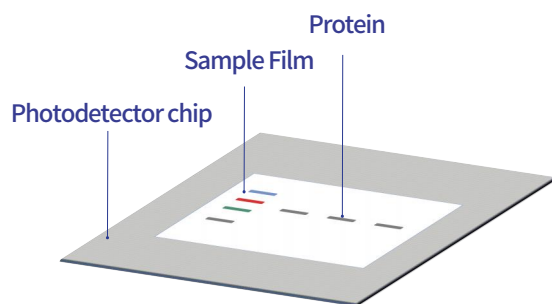
Application Scenario

Western blot imaging and analysis of experimental samples

Product Characteristics

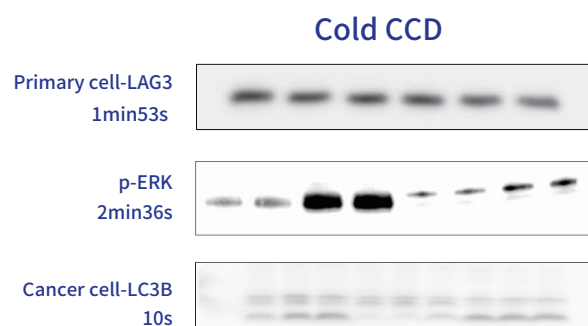
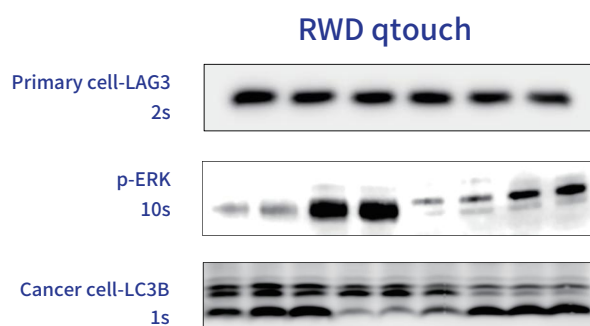
High Sensitivity

- Imaging with direct contact between the photodetector chip and the sample membrane.
- Reduces light signal loss by more than 99%, capturing extremely weak signals.
- Improves sensitivity and quantitative range by two orders of magnitude.
- Three sensitivity levels for adjustment to fit a wider range of samples.



Rapid Imaging

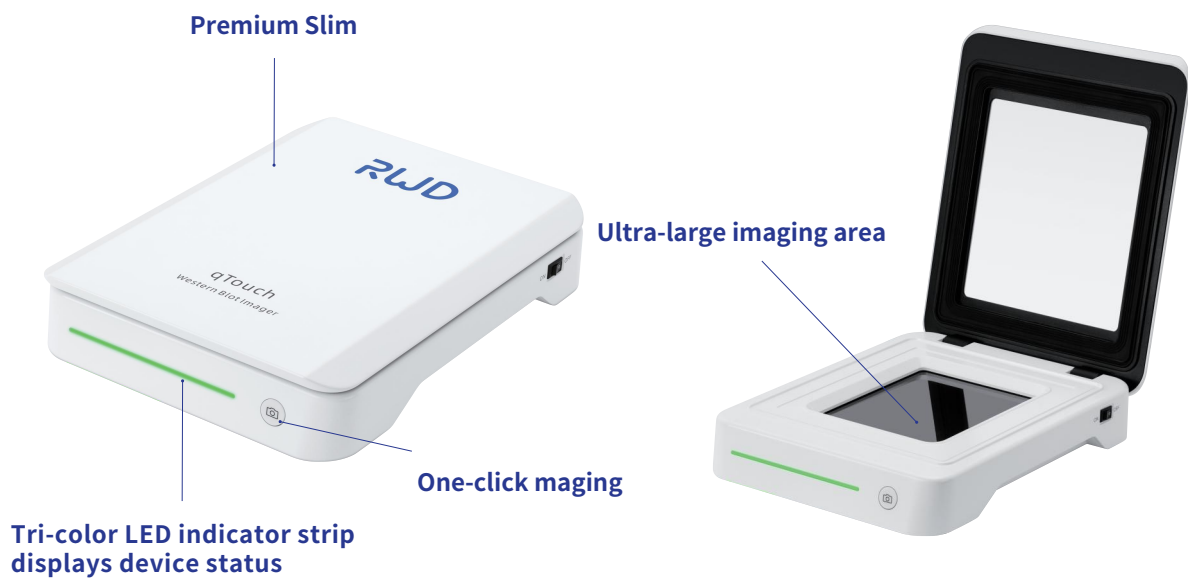
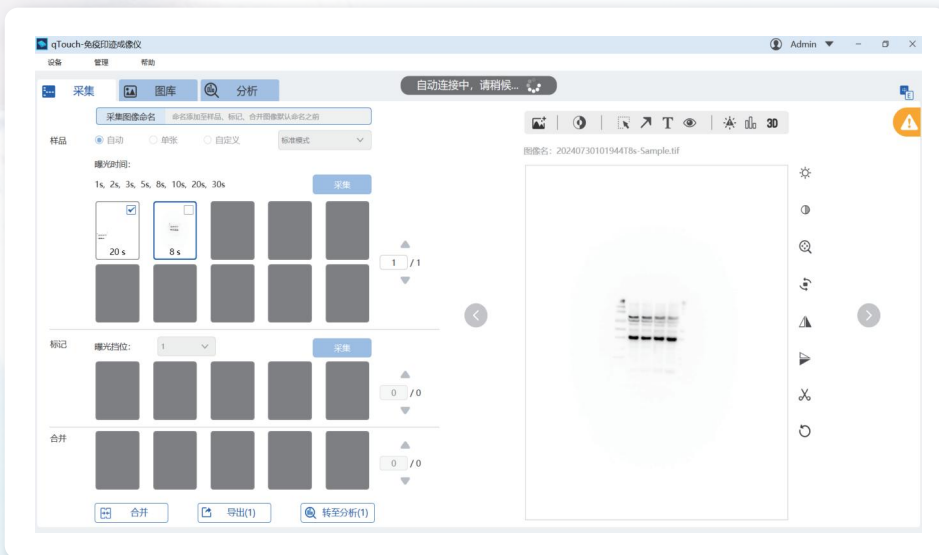
- Versatile exposure modes, with a transmission speed greater than 1000Mbps for rapid image output.
- Most samples can achieve high-quality imaging within 1 second.
- Significantly reduces the time required for collecting low-abundance samples.
- Custom image algorithms ensure high-quality images.





Intelligent Operation

- ④ The operation software is easy to use, feature-rich, and stable.
- ④ The device has a cover closure darkroom detection feature to ensure image quality.
- ④ It has built-in image processing and analysis capabilities, allowing for one-click band recognition.
- ④ A multi-level account system manages the data, with separate data storage for each account.



Technical Specifications

| Parameters | Description |
|--------------------------|---|
| Imaging Area Size | 108mm*134mm (145 cm ²) |
| Photosensitive chip Area | 140mm*120mm (168 cm ²) |
| Device Power | Powered by a DC12V adapter |
| Imaging Time | 0.1 - 600 seconds. Common samples can be imaged within 1 second |
| Device Interface | USB3.0 |
| Transfer Speed | Greater than 1000 Mbps |
| Sensitivity | At the pg level |
| Dimensions (W*D*H) | 216*270*66 mm |
| Weight | 3.25kg |
| Host Compatibility | Windows10,64bit |

| Software Configuration | Description |
|------------------------|--|
| Expose Mode | Automatic/Manual/Serial |
| Sensitivity Adjustment | Low Sensitivity/Standard/Ultra-High Definition in three levells |
| Imaging Algorithm | Self-developed image correction algorithm |
| Image Processing | Image cropping, rotation, inversion, contrast adjustmentt, etc. |
| Data Processing | High-precision intelligent band grayscale analysis |
| Image Output | Export in multiple resolutions: 300dpi, 600dpi, 1200dpi |
| Data Management | Multi-level account system automatically generates an irmware database |
| Other Features | 3D image viewing, overexposure warning, etc. |

Distributor in Canada
 **Beion Scientific Inc.**
 Unit 218, 3075 14th Ave, Markham ON L3R0G9, Canada
 Tel/WhatsApp: 1-289-4893376
 Email: info@beionscientific.com
 Web: www.beionscientific.com



RWD Life Science Co.,Ltd

Add: 9/F, 19/F, 20/F, Building 7A, Shenzhen International Innovation Valley, XiLi Street, Dashi 1st Road, Nanshan District, Shenzhen Web: www.rwdstco.com E-mail: rwd@rwdstco.com

RWD Life Science Inc.

Add: 6540 Lusk Blvd, Suite C161 San Diego, CA 92121
 Tel: 1-858-900-5879 Tech support: service@rwdstco.com